



## **10mm 2x2 Residential B10-MW-107**

This is a model kit and is not suitable for those under 12 years.

**Please refer to the website for  
assembly instructions.**

**Blotz  
90 Fullers Avenue  
Cricklade  
SN6 6EU**

**[info@blotz.co.uk](mailto:info@blotz.co.uk)  
[www.blotz.co.uk](http://www.blotz.co.uk)**



# 10mm 2x2 Residential B10-MW-107

Please read these instructions fully before starting construction.

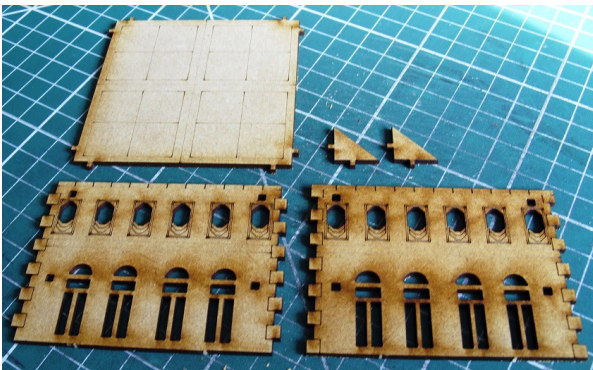
PVA or equivalent glue will be required to stick sections together.

Sand paper can be used to gently clean any joints.

A sharp modelling knife will be required to remove sections from the sprue. Please use knives with due care and remember to cut away from yourself at all times.

During the construction of this model, you may find it convenient to use pegs / elastic bands to hold pieces in place while you allow glue to dry.

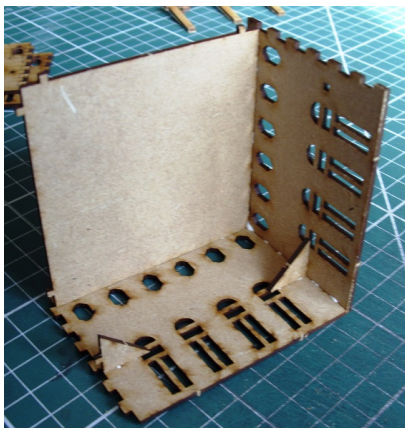
## 2x2 Residential (B10-MW-107)



Remove all the four walls, the roof and all four corner braces from the sprue.



Glue the roof to one wall section, along with 2 corner braces.



Work round the building, adding each wall in turn, along with a corner bracer.



Finally add the columns into position.

