



10mm Small Building #1

B10-MW-015

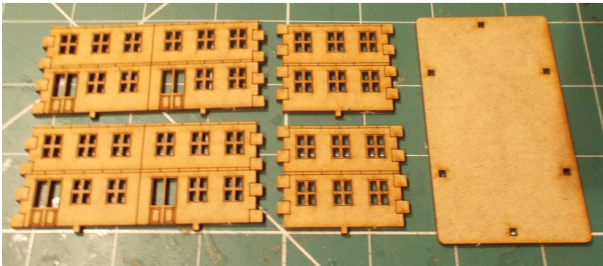
Please read these instructions fully before starting construction.

PVA or equivalent glue will be required to stick sections together.

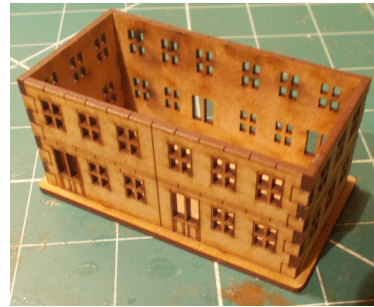
Sand paper can be used to gently clean any joints.

A sharp modelling knife will be required to remove sections from the sprue. Please use knives with due care and remember to cut away from yourself at all times.

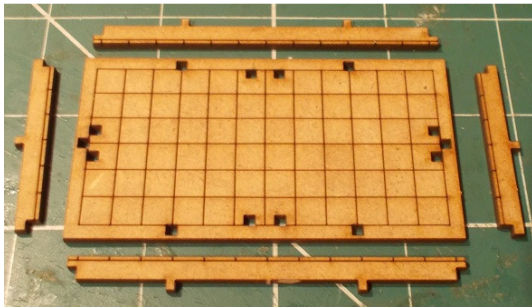
During the construction of this model, you may find it convenient to use pegs / elastic bands to hold pieces in place while you allow glue to dry.



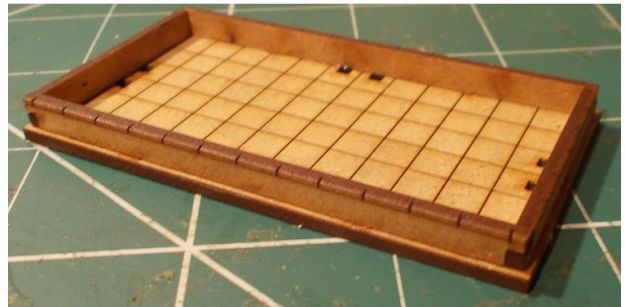
Take the base and four walls from the sprue.



Glue them to the base as shown.



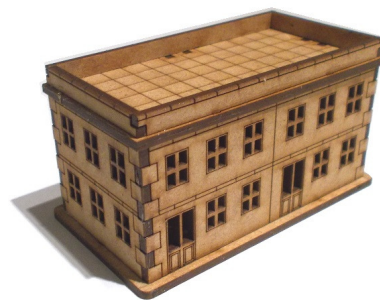
Take the roof edges and roof from the sprue.



Starting with the two short lengths, glue the roof edges onto the roof.



Turn the roof over and glue the supports into place.
Leave to dry.



Place (do not glue) the roof on top of the base.