



# 10mm Petrol Station and Shop/Diner

## B10-CS-102

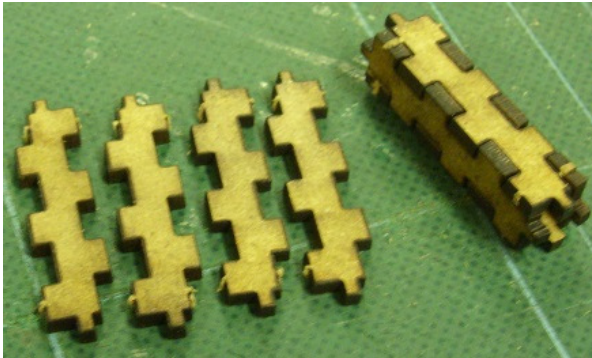
Please read these instructions fully before starting construction.

PVA or equivalent glue will be required to stick sections together.

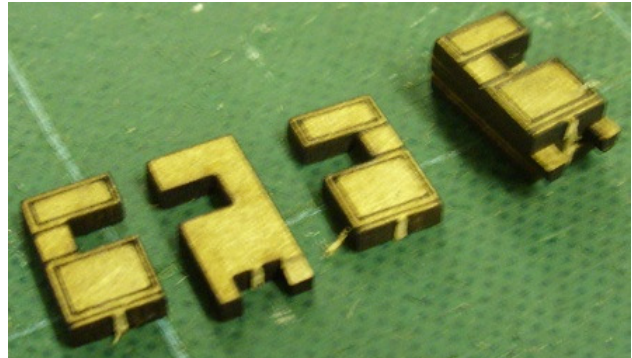
Sand paper can be used to gently clean any joints.

A sharp modelling knife will be required to remove sections from the sprue. Please use knives with due care and remember to cut away from yourself at all times.

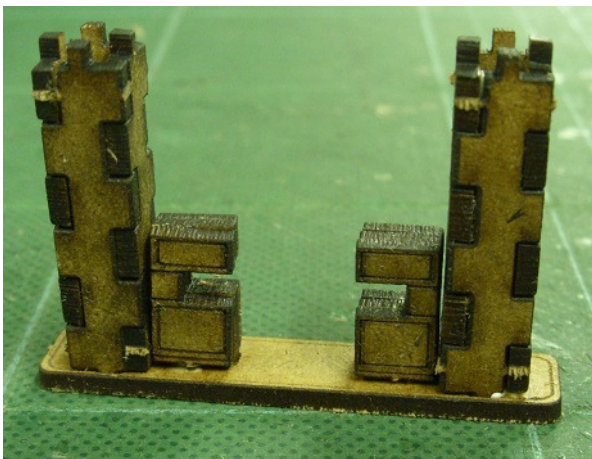
During the construction of this model, you may find it convenient to use pegs / elastic bands to hold pieces in place while you allow glue to dry.



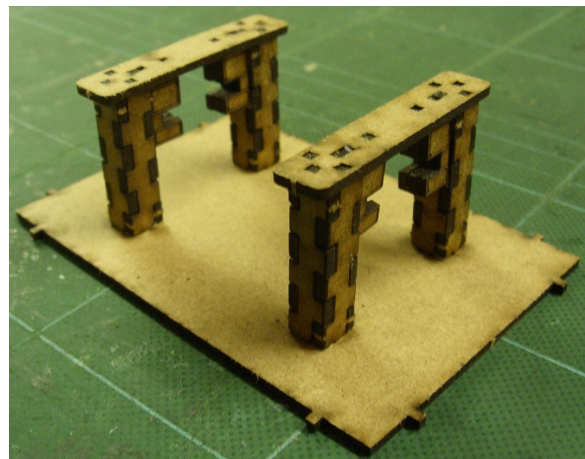
Each of the four columns is formed from the pieces shown on the left. Glue them together to form a hollow tube as shown on the right. Allow to dry.



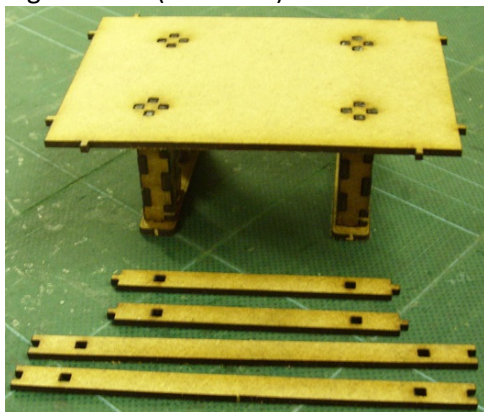
The petrol pumps are formed from the three pieces shown on the left. Glue them together to form a sandwich with the etched detail facing outwards as shown on the right. Allow to dry.



Glue two pillars and two pumps to each rectangular base (as shown).



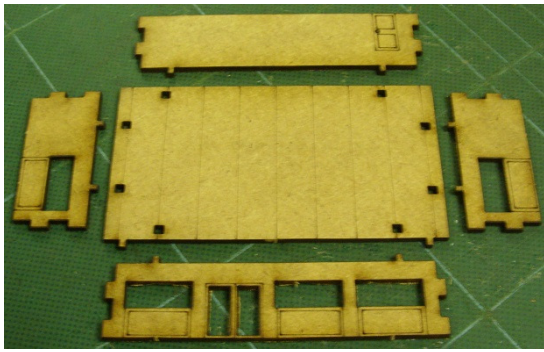
Then (when dry) glue to them to the roof section.



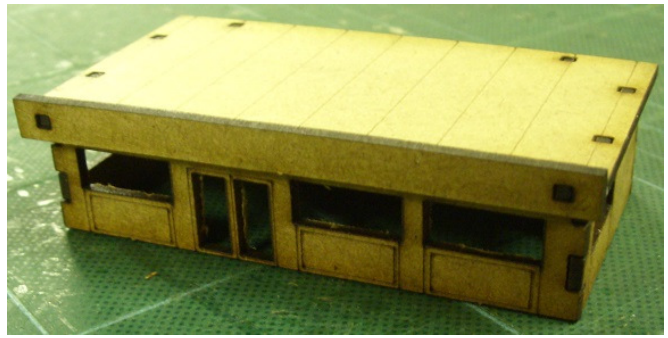
Turn the pumps the right way up and locate the four edging strips



Glue these around the edge of the roof section as shown.



The shop/diner is formed from the pieces shown. Glue these together to form the structure shown on the right, ensuring the lugs on the roof are facing towards the door piece.



Then glue the signboard into position.

