



10mm Octagonal Building

B10-CS-501

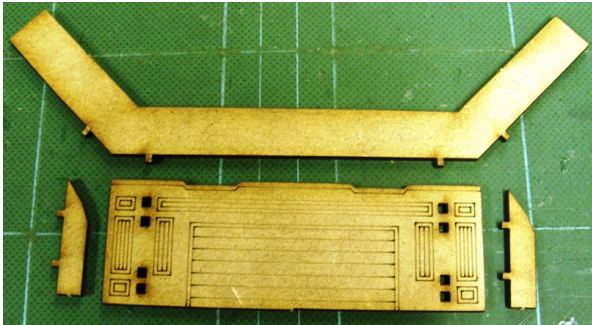
Please read these instructions fully before starting construction.

PVA or equivalent glue will be required to stick sections together.

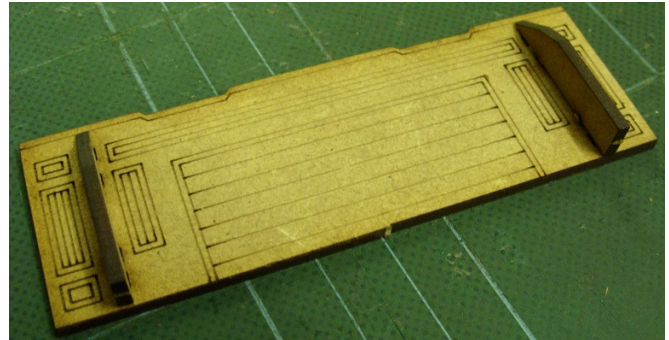
Sand paper can be used to gently clean any joints.

A sharp modelling knife will be required to remove sections from the sprue. Please use knives with due care and remember to cut away from yourself at all times.

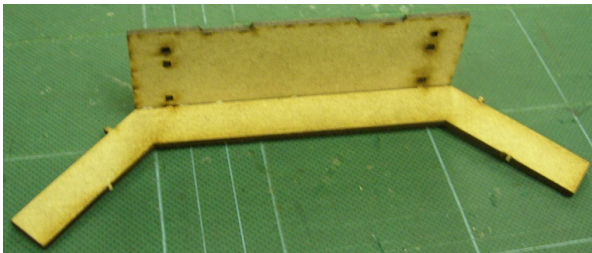
During the construction of this model, you may find it convenient to use pegs / elastic bands to hold pieces in place while you allow glue to dry.



Remove one wall, two outer supports and one main brace from the sprue.



Glue the supports to the wall, with the pointed end towards the top of the wall (as shown above).



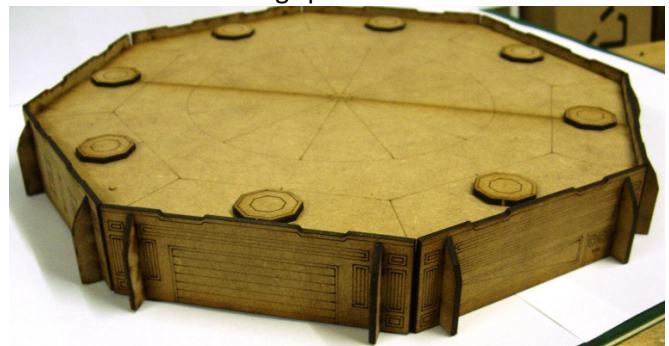
Glue the brace to the back of the wall using the two lowest holes (see above).



Glue one half of the octagonal roof to the wall using the two highest holes. Turn the whole assembly over and attach two more wall sections using the holes / lugs provided.



Repeat this with alternating walls and braces until the entire structure is surrounded.



Turn the structure over and glue the octagonal details into position.