



## 10mm 3x2 Ruined Foyer

### B10-MW-115

Please read these instructions fully before starting construction.

PVA or equivalent glue will be required to stick sections together.

Sand paper can be used to gently clean any joints.

A sharp modelling knife will be required to remove sections from the sprue. Please use knives with due care and remember to cut away from yourself at all times.

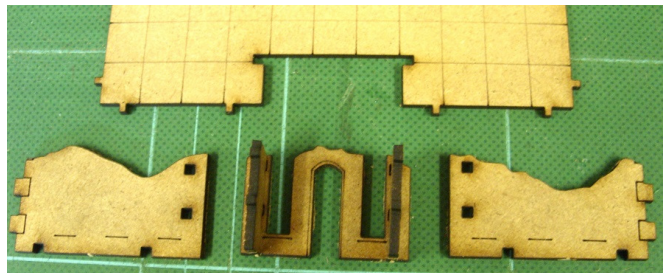
During the construction of this model, you may find it convenient to use pegs / elastic bands to hold pieces in place while you allow glue to dry.

#### Ruined Foyer (B10-MW-115)



Start by removing the sections shown above (left) from the sprue. There are enough parts to create both doorway sections.

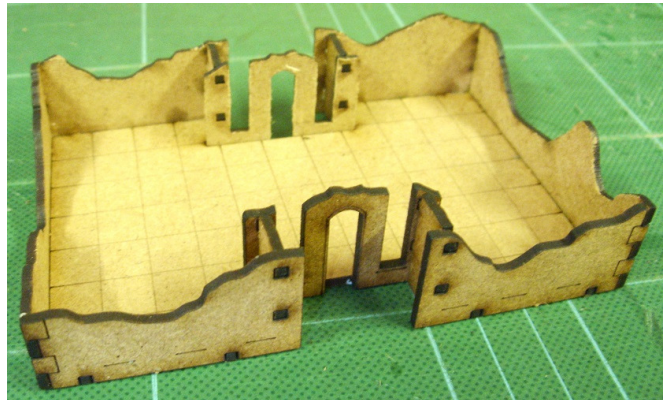
Glue them together as shown in the image on the right.



The front (and back) walls are formed from the pieces shown above.



Glue the door into the space provided, then glue the front walls into place (as shown above)



Attach the two side walls



Finally glue the decorative broken pillars into position. There are gaps in the lines around the walls where the pillars go. Which pillar goes in which position is up to you.