



**BLOTZ**

## 15mm Office Block (Damaged)

**B15-CS-010**

Please read these instructions fully before starting construction.

PVA or equivalent glue will be required to stick sections together.

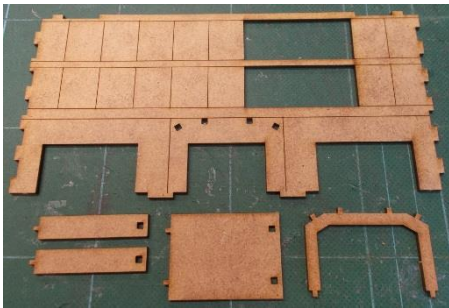
Sand paper can be used to gently clean any joints.

A sharp modelling knife will be required to remove sections from the sprue. Please use knives with due care and remember to cut away from yourself at all times.

During the construction of this model, you may find it convenient to use pegs / elastic bands to hold pieces in place while you allow glue to dry.

We suggest you paint the component parts of your model prior to assembly (see below).

### Lower Level



Start by removing the front wall and awning sections (shown above) from the sprue.



Glue the awning together as shown above.



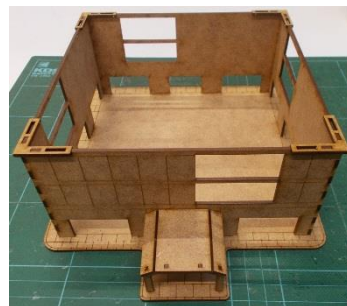
Attach it to the front wall.



Take the other three walls and the brackets.



Attach the side walls, then glue the brackets to the corners (being careful not to get glue in their larger holes)



Glue the whole assembly to the base.



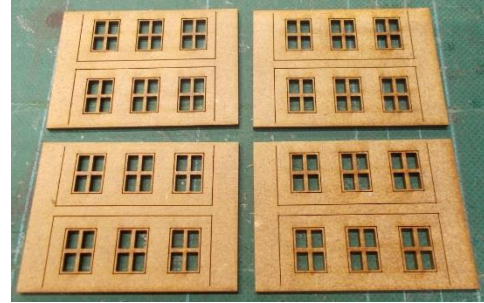
Take the inner walls.



Glue them into place behind the openings.



The etched lines on the inner walls will align with the edges of the openings.



Take the window pieces.



Glue these behind the openings in the walls.



As with the inner walls, the etched lines will align with the edges of the openings.



Take the decorative strips.

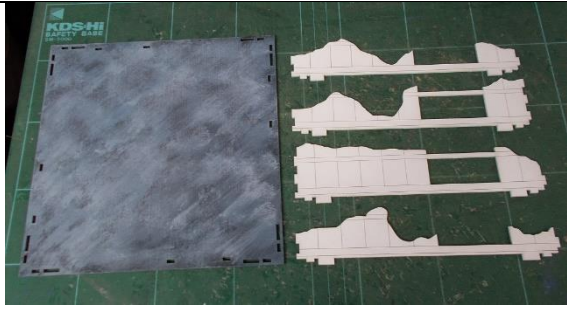


Glue each one in place – it aligns with the left hand edge and will extend out by 2mm at the right hand edge.



The completed ground floor.

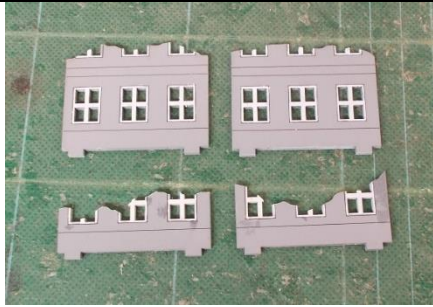
## Upper Level



Start by removing the outer walls and base from the sprue.



Glue the walls into the base – they will extend out of the bottom of the base by around 2mm. Ensure that the height of the walls match at the corners.



Take the window pieces.



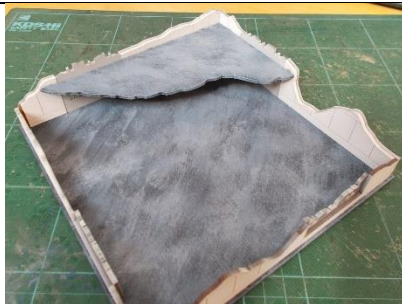
Using the holes in the base to align them, stick the window sections inside the walls (as shown above) ensuring the edges of the window pieces are the same height as the walls they are next to.



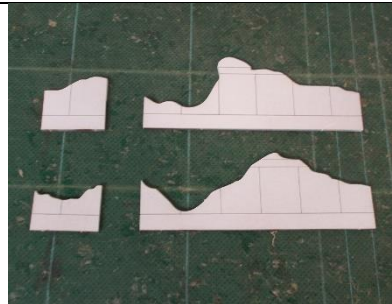
The pieces which make up the internal broken floor.



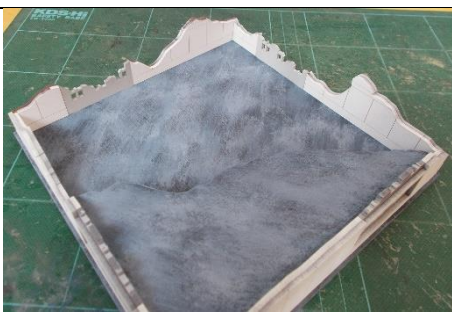
Glue them together as shown.



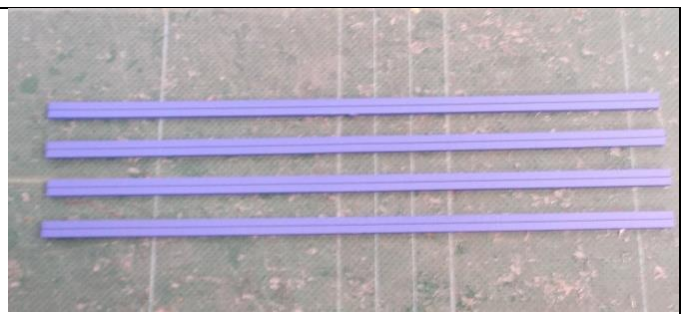
Insert the sub-assembly you just made into the building ensuring the shape of the top of the internal walls match the shape of the external walls.



The remaining inner wall pieces.



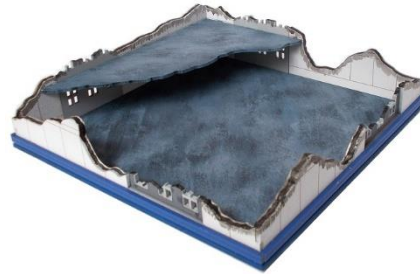
Glue them into position.



Take the lower strips.



Glue them into position using the lines etches into the walls to align them.



The completed level.

### **Painting**

We removed the four window sections from the sprue and sprayed these grey using a car undercoat aerosol. The base and internal broken floor were sprayed black and once dry was dry brushed with various shades of grey.

The rest of our model was sprayed white while it was still on the sprues using a white car undercoat aerosol spray.

The blue sections were then painted with a household emulsion paint and the outlines of the windows painted with white model paint.

The broken walls had their core painted black and streaks of black ink were added inside and out.