



BLOTZ

15mm Old West – Barber / Surgeon

B15-OW-001

Please read these instructions fully before starting construction.

PVA or equivalent glue will be required to stick sections together.

Sand paper can be used to gently clean any joints.

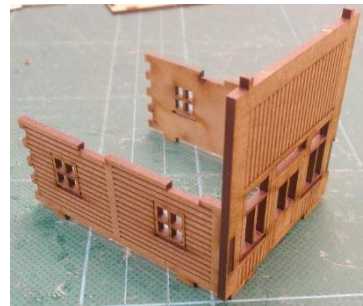
A sharp modelling knife will be required to remove sections from the sprue. Please use knives with due care and remember to cut away from yourself at all times.

During the construction of this model, you may find it convenient to use pegs / elastic bands to hold pieces in place while you allow glue to dry.

Note: Due to their size / thickness certain parts on this kit are very fragile. Please use extreme care when working with them to prevent damage.



Remove the front and side pieces shown above from the sprue.



Glue the side pieces into place.



Add the rear wall.



Then glue the base to the model.



Add the front framework.



Attach the top bar.



Add the rear framework



The add the side frames.



The window sills.



Glue these into place in the slots under each window.



Choose which sign to use.



Glue this into position.



Take the frame components of the roof.



Glue them together as shown above.



Then glue the roof plate into position.



Add the side frames to the roof.



Attach the rood strips.



Place (do not glue) the roof onto the base of the model.



The finished model.