



BLOTZ

15mm Old West – Generic Store

B15-OW-003

Please read these instructions fully before starting construction.

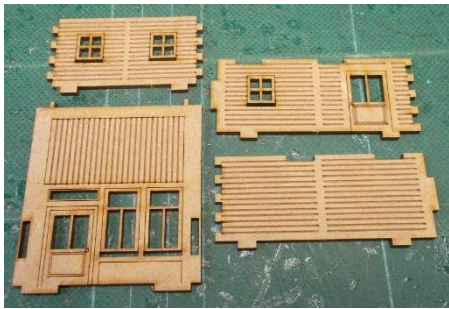
PVA or equivalent glue will be required to stick sections together.

Sand paper can be used to gently clean any joints.

A sharp modelling knife will be required to remove sections from the sprue. Please use knives with due care and remember to cut away from yourself at all times.

During the construction of this model, you may find it convenient to use pegs / elastic bands to hold pieces in place while you allow glue to dry.

Note: Due to their size / thickness certain parts on this kit are very fragile. Please use extreme care when working with them to prevent damage.



Remove the front and side pieces shown above from the sprue.



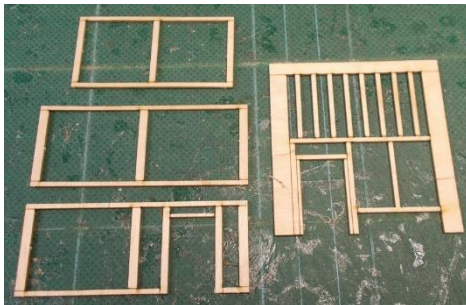
Glue the side pieces into place.



Then glue the rear wall and base to the model.



Glue the top bar into position.



The framework pieces.



Glue the framework pieces into place.



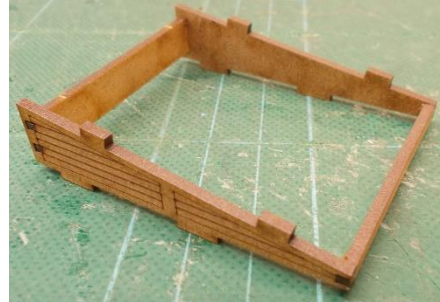
The window sills.



Glue these into place in the slots under each window.



Take the frame components of the roof.



Glue them together as shown above.



Then glue the roof plate into position.



Add the side frames and top surround to the roof.



The completed model.