



# 6mm 3x2 Shops Foyer

## B06-MW-100

Please read these instructions fully before starting construction.

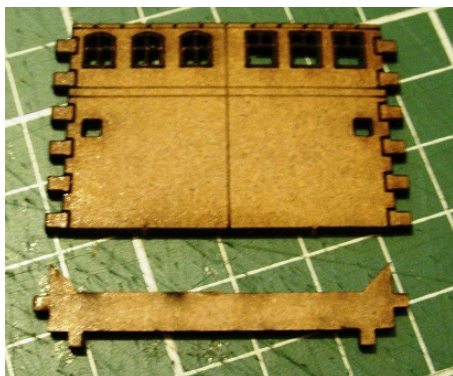
PVA or equivalent glue will be required to stick sections together.

Sand paper can be used to gently clean any joints.

A sharp modelling knife will be required to remove sections from the sprue. Please use knives with due care and remember to cut away from yourself at all times.

During the construction of this model, you may find it convenient to use pegs / elastic bands to hold pieces in place while you allow glue to dry.

### Foyer (B06-MW-100)



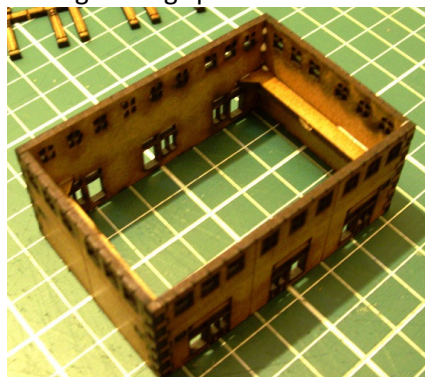
Start by removing the short sides from the sprue along with the two bracers.



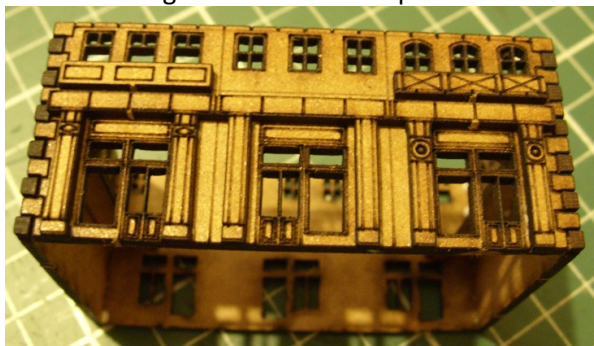
Glue the bracers bar to the **back** of the short side, positioned using the lugs provided.



Attach the long sides, so that both the side lugs and bracer lugs fit into the holes provided.



This will give you a hollow box shape.



Attach the columns and balconies to the long sides as shown above.



Then attach the columns and balconies to the short sides.



## 6mm 3x2 Shops Middle

### B06-MW-150

Please read these instructions fully before starting construction.

PVA or equivalent glue will be required to stick sections together.

Sand paper can be used to gently clean any joints.

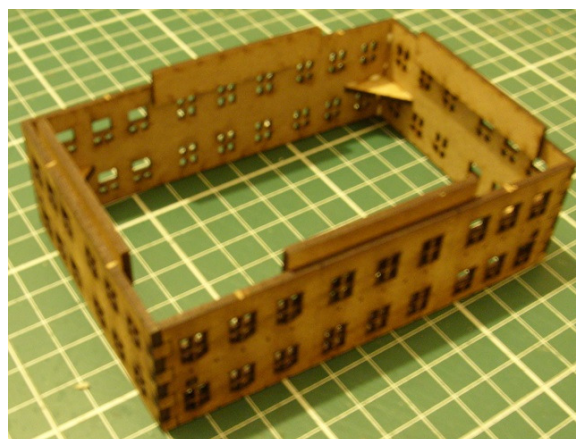
A sharp modelling knife will be required to remove sections from the sprue. Please use knives with due care and remember to cut away from yourself at all times.

During the construction of this model, you may find it convenient to use pegs / elastic bands to hold pieces in place while you allow glue to dry.

#### Mid-Section (B06-MW-150)

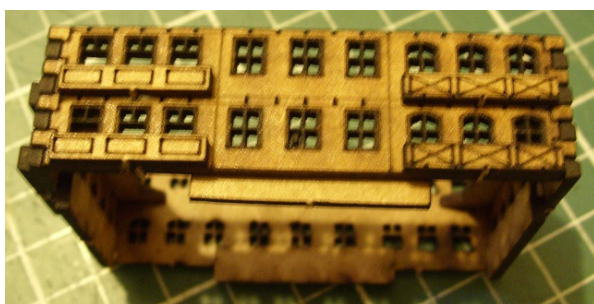


Remove the walls, two bracer bars and four supports from the sprue. Glue the bracers to the **back** of the two short walls as shown in the example above. Also attach the support to the bottom edge on the **back** of each wall. Leave to dry.

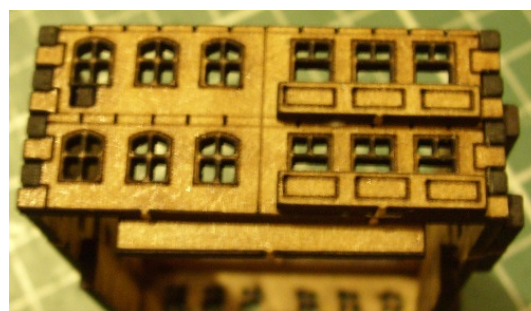


Once the bracers are dry, apply a little glue to the side lugs and glue the shorter walls in place. You should now have a hollow square structure. Leave it to dry.

Note: In the image above, the structure is upside down, so the supports are seen at the top of the picture.



Glue the balconies into position on the long walls...



...and then on the short walls.





Please read these instructions fully before starting construction.

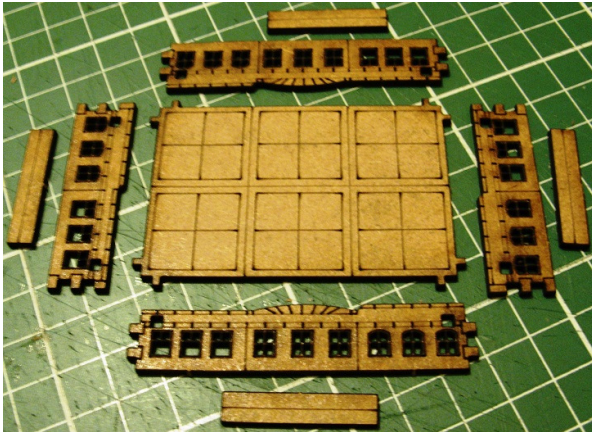
PVA or equivalent glue will be required to stick sections together.

Sand paper can be used to gently clean any joints.

A sharp modelling knife will be required to remove sections from the sprue. Please use knives with due care and remember to cut away from yourself at all times.

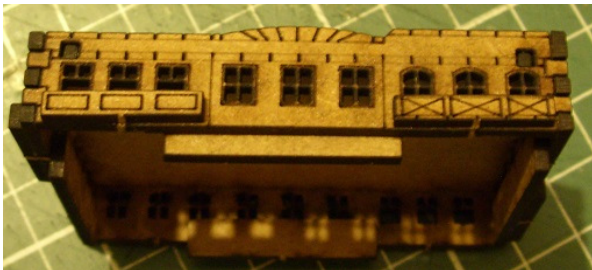
During the construction of this model, you may find it convenient to use pegs / elastic bands to hold pieces in place while you allow glue to dry.

### Roof Section (B06-MW-200)

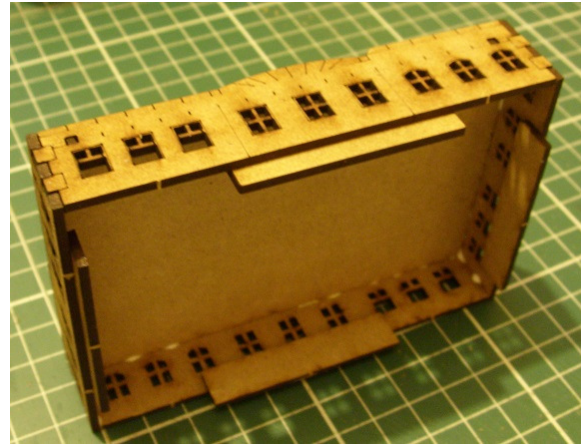


Remove the four walls, roof and supports from the sprue.

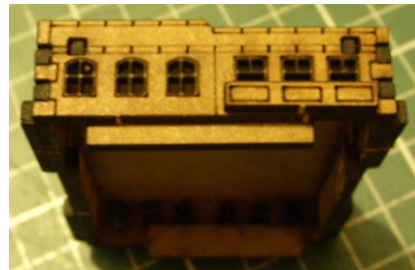
Glue the supports into position below the windows on the **back** of the walls.



Glue the balconies into position below the windows on the long sides...



Apply glue to the edges of the roof and attach the walls to it using the lugs provided (etched detail outwards).



..then on the short sides.

