



6mm 3x2 Shops Foyer

B06-MW-100

Please read these instructions fully before starting construction.

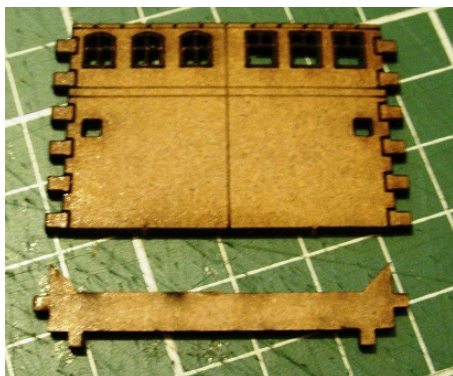
PVA or equivalent glue will be required to stick sections together.

Sand paper can be used to gently clean any joints.

A sharp modelling knife will be required to remove sections from the sprue. Please use knives with due care and remember to cut away from yourself at all times.

During the construction of this model, you may find it convenient to use pegs / elastic bands to hold pieces in place while you allow glue to dry.

Foyer (B06-MW-100)



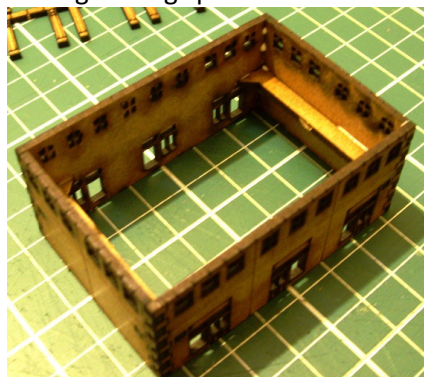
Start by removing the short sides from the sprue along with the two bracers.



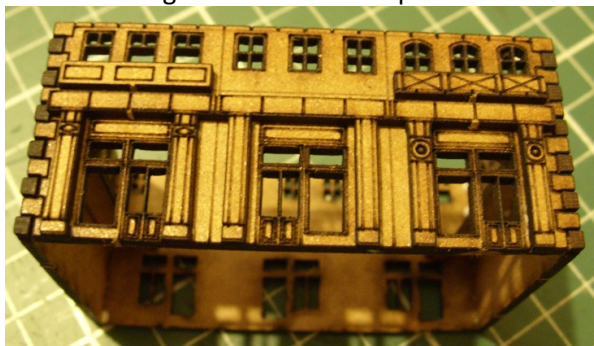
Glue the bracers bar to the **back** of the short side, positioned using the lugs provided.



Attach the long sides, so that both the side lugs and bracer lugs fit into the holes provided.



This will give you a hollow box shape.



Attach the columns and balconies to the long sides as shown above.



Then attach the columns and balconies to the short sides.

BLOTZ

6mm 3x2 Shops Middle (Broken)

B06-MW-153

Please read these instructions fully before starting construction.

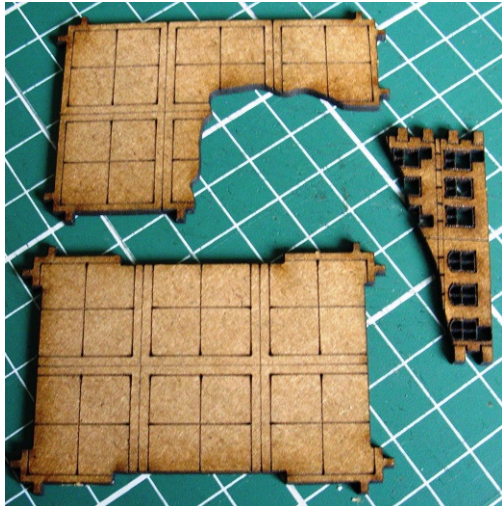
PVA or equivalent glue will be required to stick sections together.

Sand paper can be used to gently clean any joints.

A sharp modelling knife will be required to remove sections from the sprue. Please use knives with due care and remember to cut away from yourself at all times.

During the construction of this model, you may find it convenient to use pegs / elastic bands to hold pieces in place while you allow glue to dry.

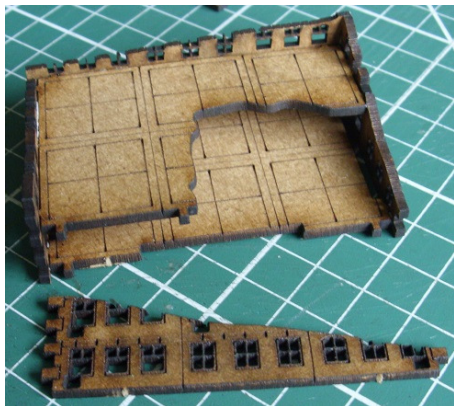
Middle (Broken) Section (B06-MW-153)



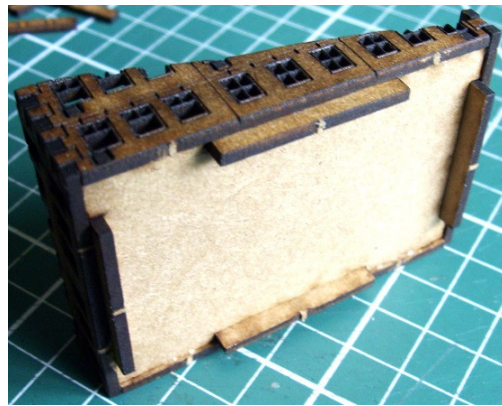
Take both floor sections and one end from the sprue.



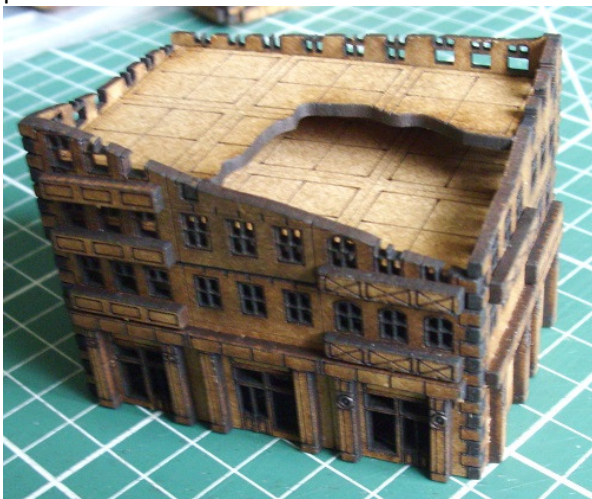
Glue the floors into position (to the **back** of the wall) using the lugs provided. The etched detail should be facing upwards



Move around the building, gluing the walls into position as shown above.



Glue the supports into position behind each wall.



Finally glue the balconies into position.