



6mm 3x3 Tower Block Middle

B06-CS-150

Please read these instructions fully before starting construction.

PVA or equivalent glue will be required to stick sections together.

Sand paper can be used to gently clean any joints.

A sharp modelling knife will be required to remove sections from the sprue. Please use knives with due care and remember to cut away from yourself at all times.

During the construction of this model, you may find it convenient to use pegs / elastic bands to hold pieces in place while you allow glue to dry.

Mid-Section (B06-CS-150)



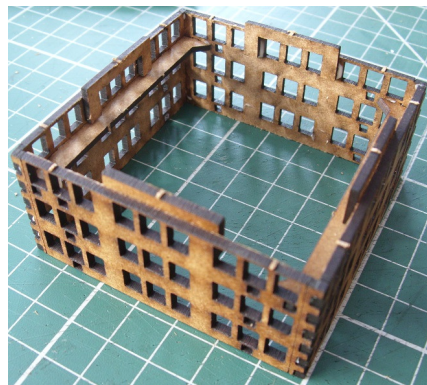
Take two identical wall pieces and the two support from the sprue. (check the lugs on the sides of the walls to ensure they are the same).



Glue the one support to the **back** of each wall as shown above. Leave them to dry.



Take the four 'C' shaped supports from the sprue and glue each one to the bottom **rear** of each of the four wall pieces as shown above. The arms of the 'C' should fit between the lower windows, with the base of the 'C' protruding (see next pic)



Glue the four walls together as shown above. It is easiest to do this if you have the building upside down as shown. Leave to dry.



Take the twelve decorative strips from the sprue and attach three to each side of the building as shown above.

