



6mm 3x2 Shops Middle

B06-MW-150

Please read these instructions fully before starting construction.

PVA or equivalent glue will be required to stick sections together.

Sand paper can be used to gently clean any joints.

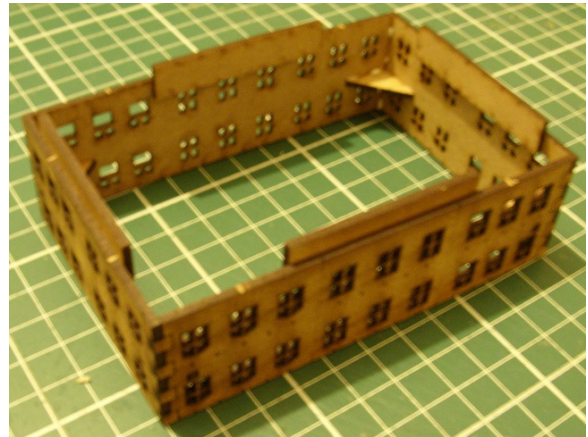
A sharp modelling knife will be required to remove sections from the sprue. Please use knives with due care and remember to cut away from yourself at all times.

During the construction of this model, you may find it convenient to use pegs / elastic bands to hold pieces in place while you allow glue to dry.

Mid-Section (B06-MW-150)

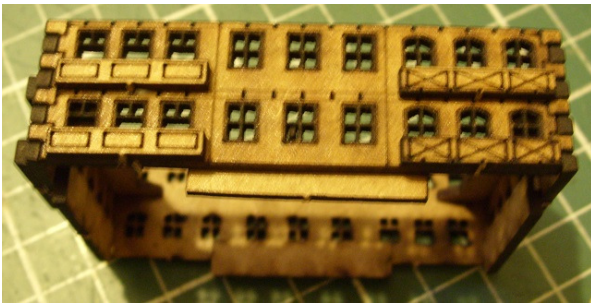


Remove the walls, two bracer bars and four supports from the sprue. Glue the bracers to the **back** of the two short walls as shown in the example above. Also attach the support to the bottom edge on the **back** of each wall. Leave to dry.

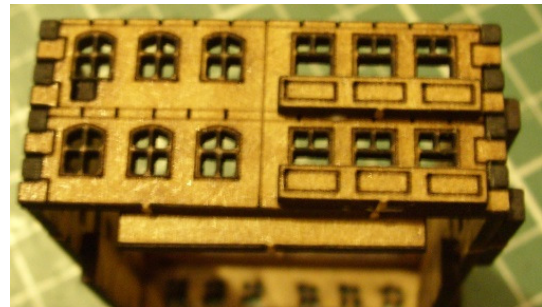


Once the bracers are dry, apply a little glue to the side lugs and glue the shorter walls in place. You should now have a hollow square structure. Leave it to dry.

Note: In the image above, the structure is upside down, so the supports are seen at the top of the picture.



Glue the balconies into position on the long walls...



...and then on the short walls.

