



10mm 3x3 Tower Block Foyer

B10-CS-209

Please read these instructions fully before starting construction.

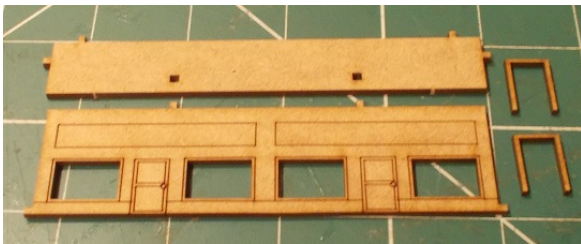
PVA or equivalent glue will be required to stick sections together.

Sand paper can be used to gently clean any joints.

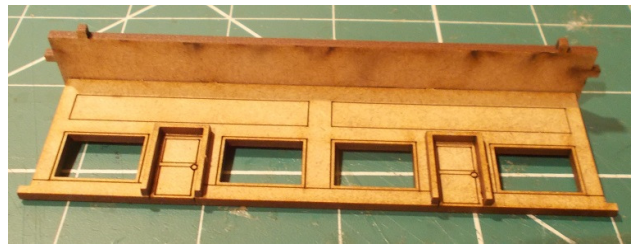
A sharp modelling knife will be required to remove sections from the sprue. Please use knives with due care and remember to cut away from yourself at all times.

During the construction of this model, you may find it convenient to use pegs / elastic bands to hold pieces in place while you allow glue to dry.

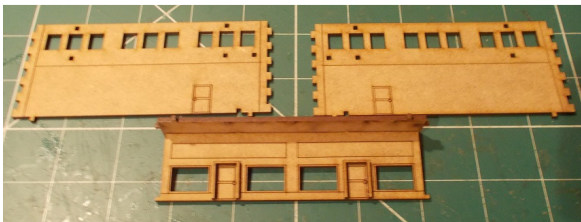
Foyer



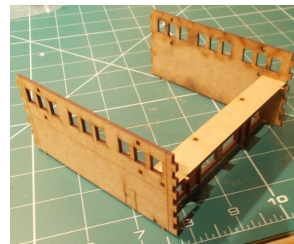
Remove the inner front wall, its "roof" and two door frames from the sprue.



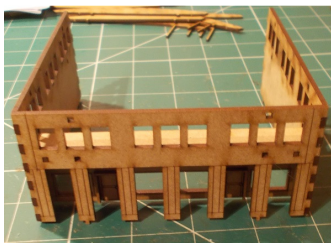
Attach the wall to the "roof" then glue the door frames in position as shown.



Now remove the two side walls from the sprue.



Glue the side walls to the inner front wall assembly, aligning it using the holes/lugs provided.



Glue the outer front wall into place.



Then attach the back wall.



Glue the whole model to the base. Note there is a "B" etched into the base which should be at the back of the building.



Glue the door frames around the side doors and on the back of the building.



Finally glue the sun-screens into place (etched detail upwards).