



10mm 3x3 Tower Block Middle (Damaged) B10-CS-263

Please read these instructions fully before starting construction.

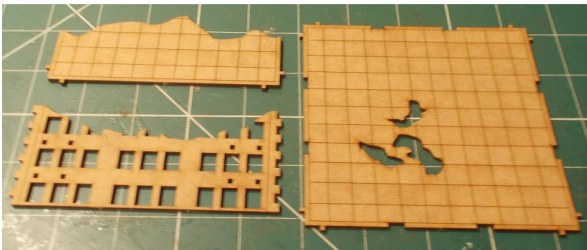
PVA or equivalent glue will be required to stick sections together.

Sand paper can be used to gently clean any joints.

A sharp modelling knife will be required to remove sections from the sprue. Please use knives with due care and remember to cut away from yourself at all times.

During the construction of this model, you may find it convenient to use pegs / elastic bands to hold pieces in place while you allow glue to dry.

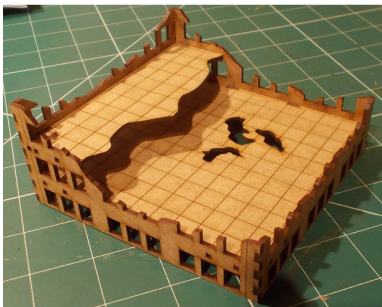
Ruined Middle-Section



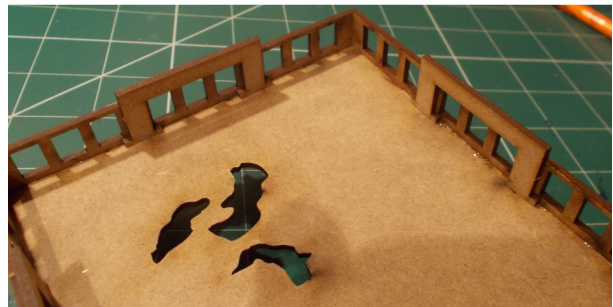
Remove the two floor sections and the tall wall piece from the sprue.



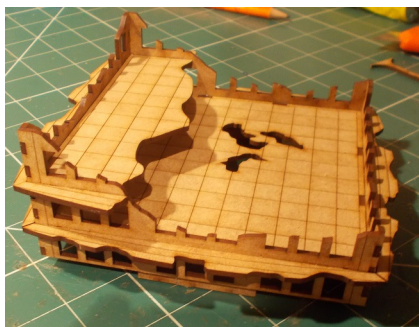
Glue the floors to the wall as shown, aligning them using the holes / lugs provided.



Attach the other wall pieces as shown above.



Flip the whole assembly over and glue the support pieces into position as shown.



Flip it right way up again and glue the sun screen pieces into place.