



## 15mm Post & Rail Fences

### B15-WF-102

Please read these instructions fully before starting construction.

PVA or equivalent glue will be required to stick sections together.

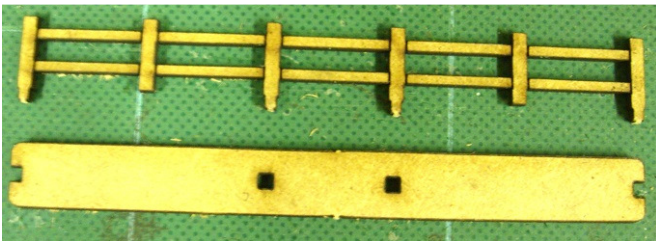
Sand paper can be used to gently clean any joints.

A sharp modelling knife will be required to remove sections from the sprue. Please use knives with due care and remember to cut away from yourself at all times.

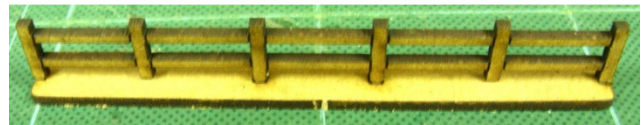
During the construction of this model, you may find it convenient to use pegs / elastic bands to hold pieces in place while you allow glue to dry.

A full-colour copy of these instructions can be found on our website: [www.blotz.co.uk](http://www.blotz.co.uk)

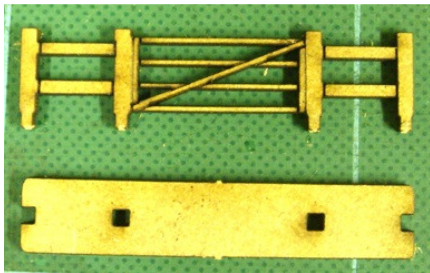
#### Post & Rail Fences (B15-WF-102)



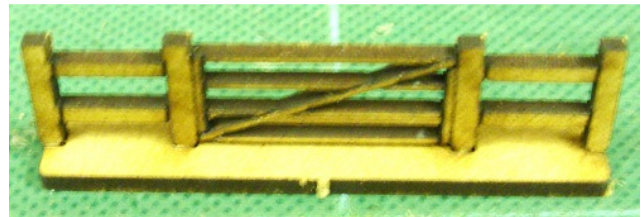
For each fence remove one base and one set of rails from the sprue.



Glue the rails to the base using the lugs/holes provided (see above).



The gateway is formed from the pieces shown above.



Glue gateway to the base using the lugs/holes provided (see above).