



28mm Sci-Fi Walls – 95mm Wall #3

B28-SFW-008

Please read these instructions fully before starting construction.

PVA or equivalent glue will be required to stick sections together.

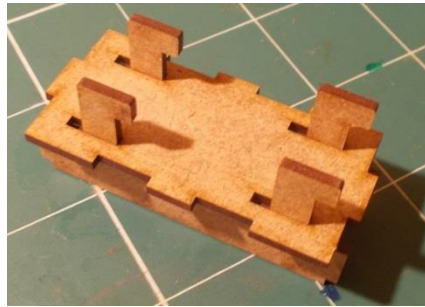
Sand paper can be used to gently clean any joints.

A sharp modelling knife will be required to remove sections from the sprue. Please use knives with due care and remember to cut away from yourself at all times.

During the construction of this model, you may find it convenient to use pegs / elastic bands to hold pieces in place while you allow glue to dry.



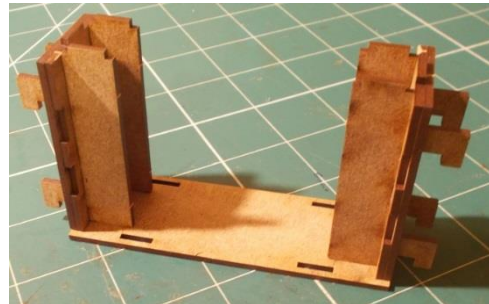
Each end of the wall is formed from the pieces shown above.



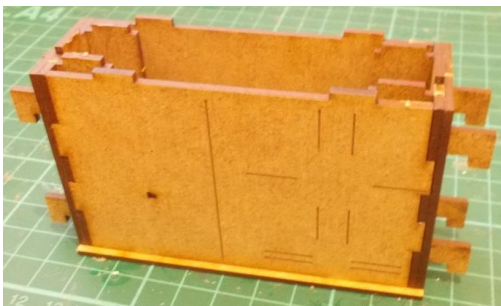
Glue the two hooked pieces through the back plate, ensuring the hooks all point in the same direction.



Add the outer later.
Repeat this for the other end piece.



Glue the two ends to the base.
The base and "Lid" are the same.



Add the side walls.



Glue the "lid" into place.



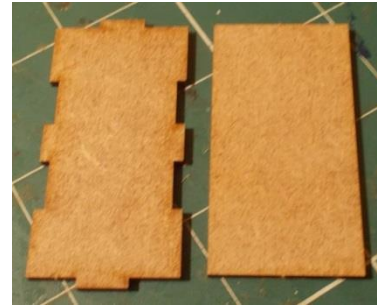
Attach the outer wall decoration.



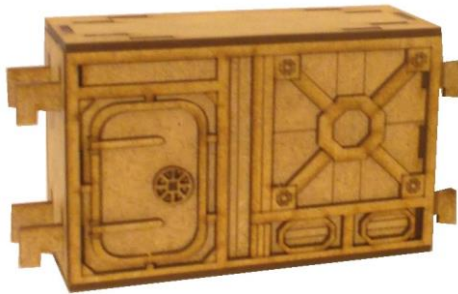
The locking wheel is formed as shown above.



Glue a locking wheel into position on each side of the wall.



If you want a flat end rather than a hooked one, use the two pieces shown above in place of the hooked end section.



The completed wall.