



28mm Mailboxes / Litter Bins

B28-ST-122

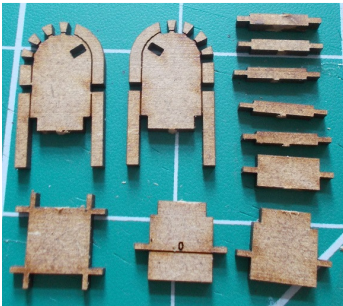
Please read these instructions fully before starting construction.

PVA or equivalent glue will be required to stick sections together.

Sand paper can be used to gently clean any joints.

A sharp modelling knife will be required to remove sections from the sprue. Please use knives with due care and remember to cut away from yourself at all times.

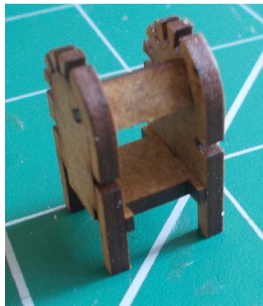
During the construction of this model, you may find it convenient to use pegs / elastic bands to hold pieces in place while you allow glue to dry.



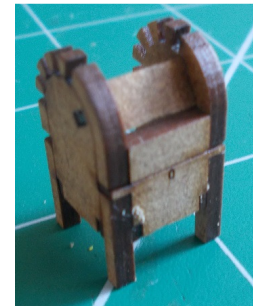
Each mailbox is made up from the pieces shown above.



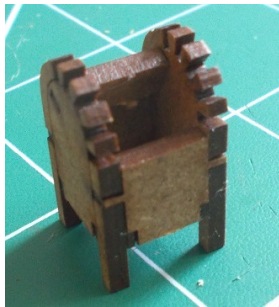
Glue the widest bar into place between the two sides as shown above.



Attach the base.



Insert the front panel.



Turn the mailbox round and insert the back panel.



Finally glue the bars into place to form the curved top.



The finished mailboxes / litter bins